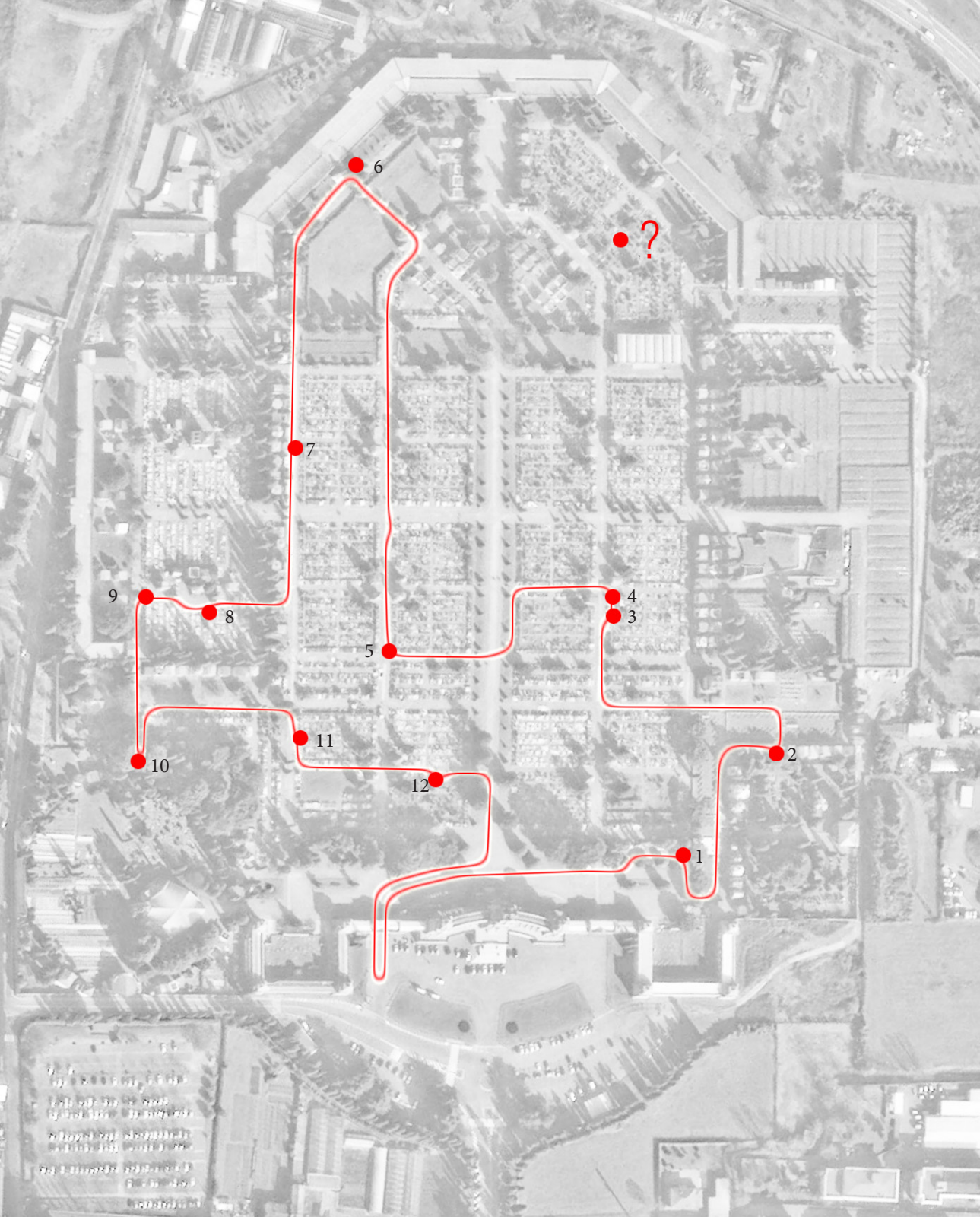


LE TOMBE DI PIZZIGONI AL CIMITERO DI BERGAMO

Luciano Motta





CIMITERO MONUMENTALE DI BERGAMO

Circuito: 1680m, 2h (circa)

12 +1 Tombe di Giuseppe Pizzigoni:

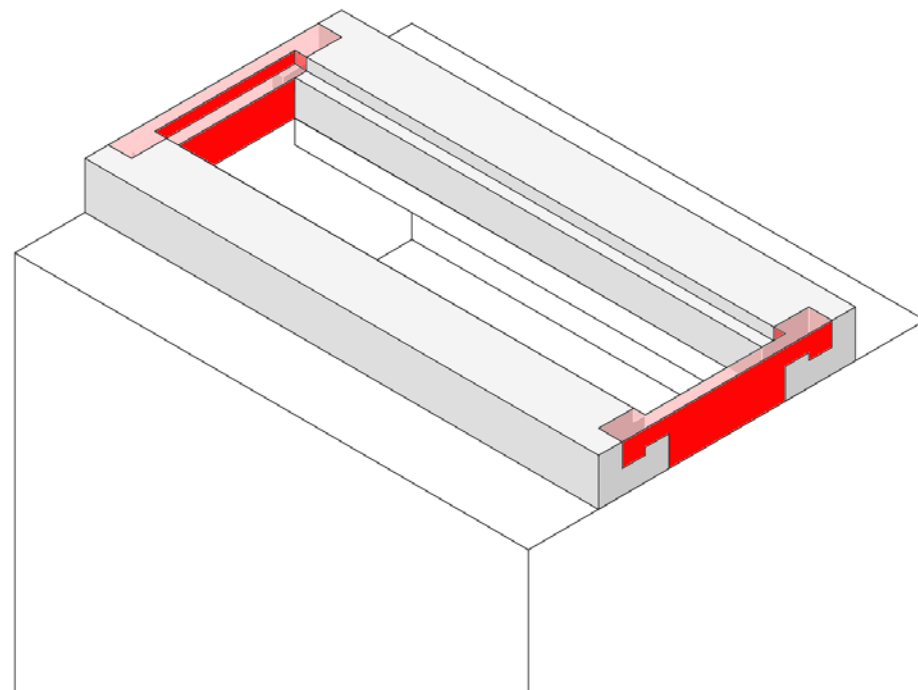
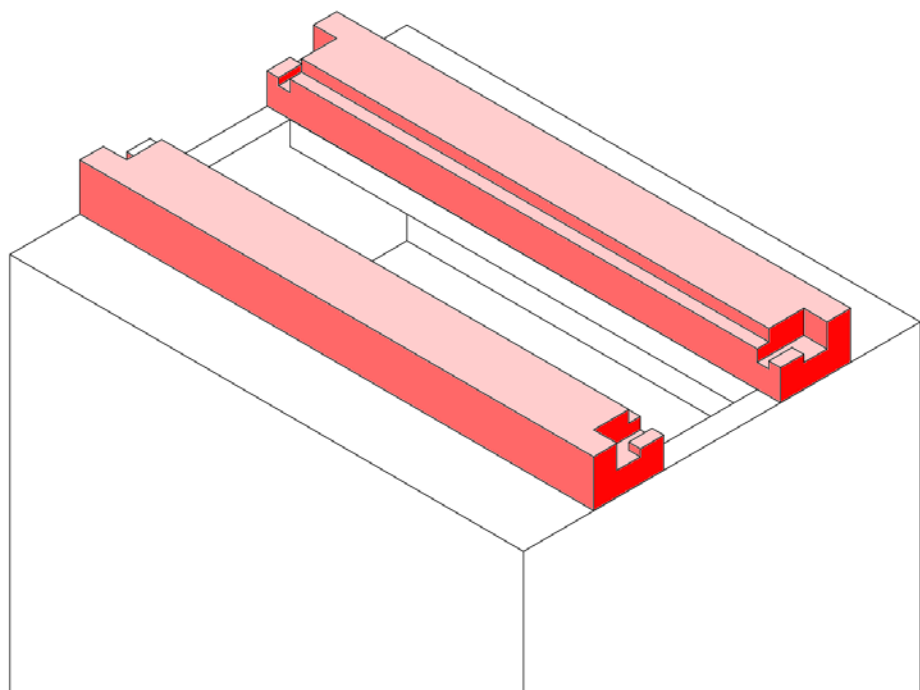
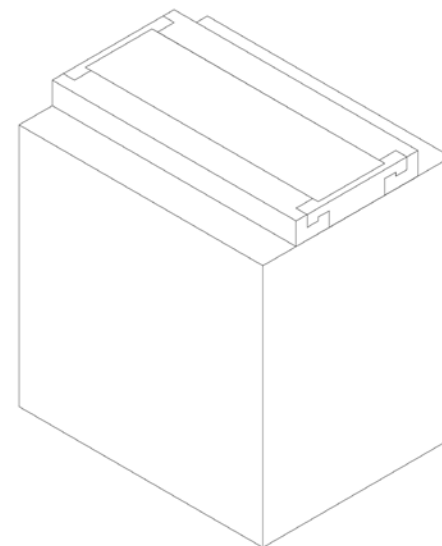
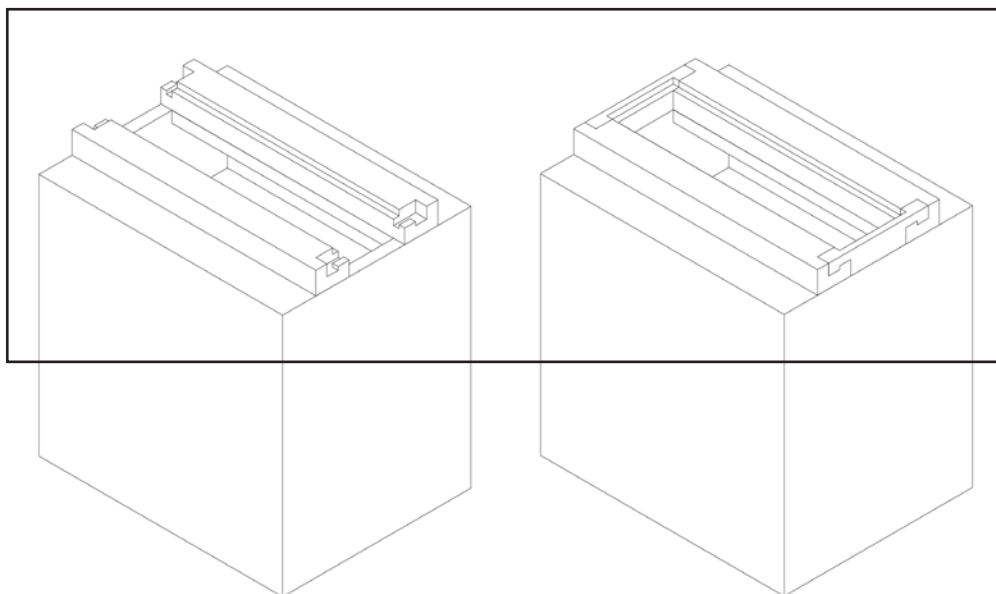
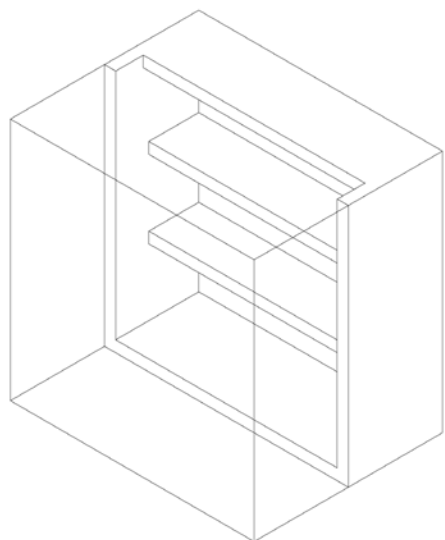
1931,	Tomba Invernizzi	(8)
1934,	Tomba Ghezzi	(12)
1934,	Tomba Teresio Facchinetti	(?)
1941?-1957,	Tomba Crespi	(5)
1936-1965?,	Tomba Bruni	(1)
1947,	Cappella Bay	(2)
1947,	Cappella Ardiani	(10)
1948-1954,	Cappella Traversi	(4)
1951,	Tomba Maffioletti	(7)
1956,	Cappella Billi	(6)
1959,	Cappella Pipia	(9)
1959,	Tomba Nani	(3)
1966,	Tomba Brandolisio	(11)

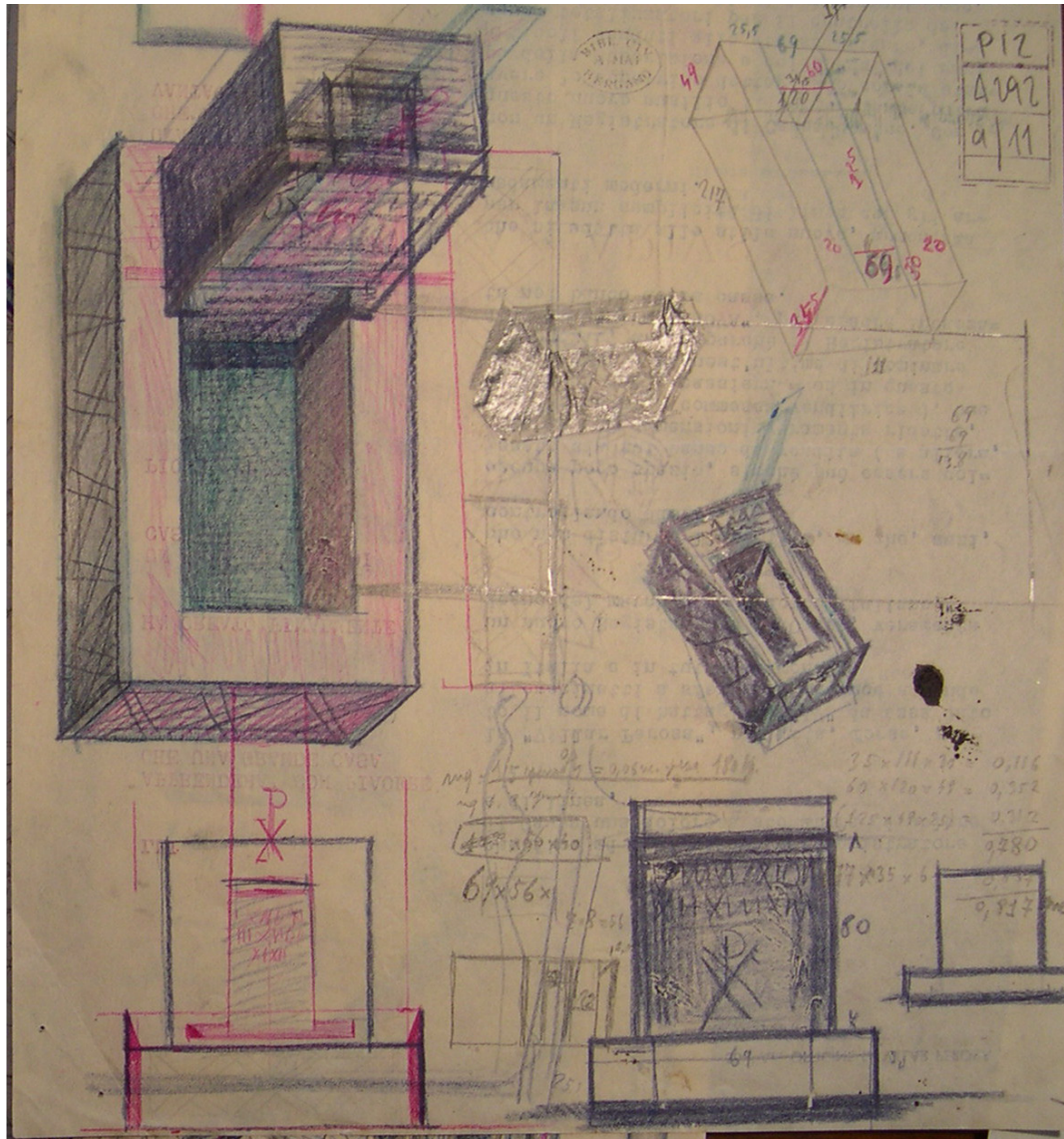
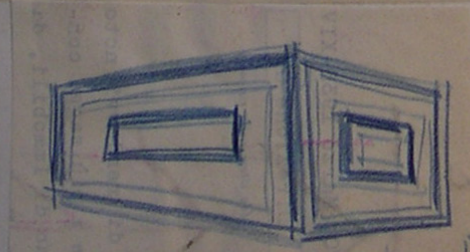
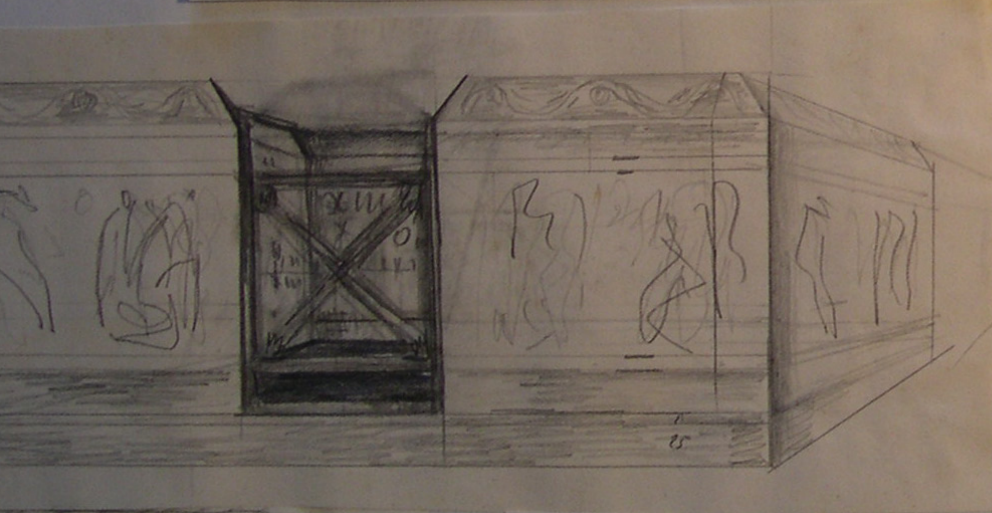
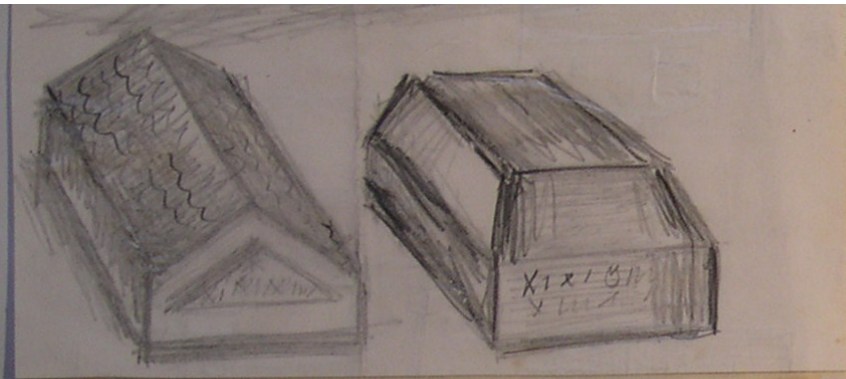


BRUNI, 1936-65?









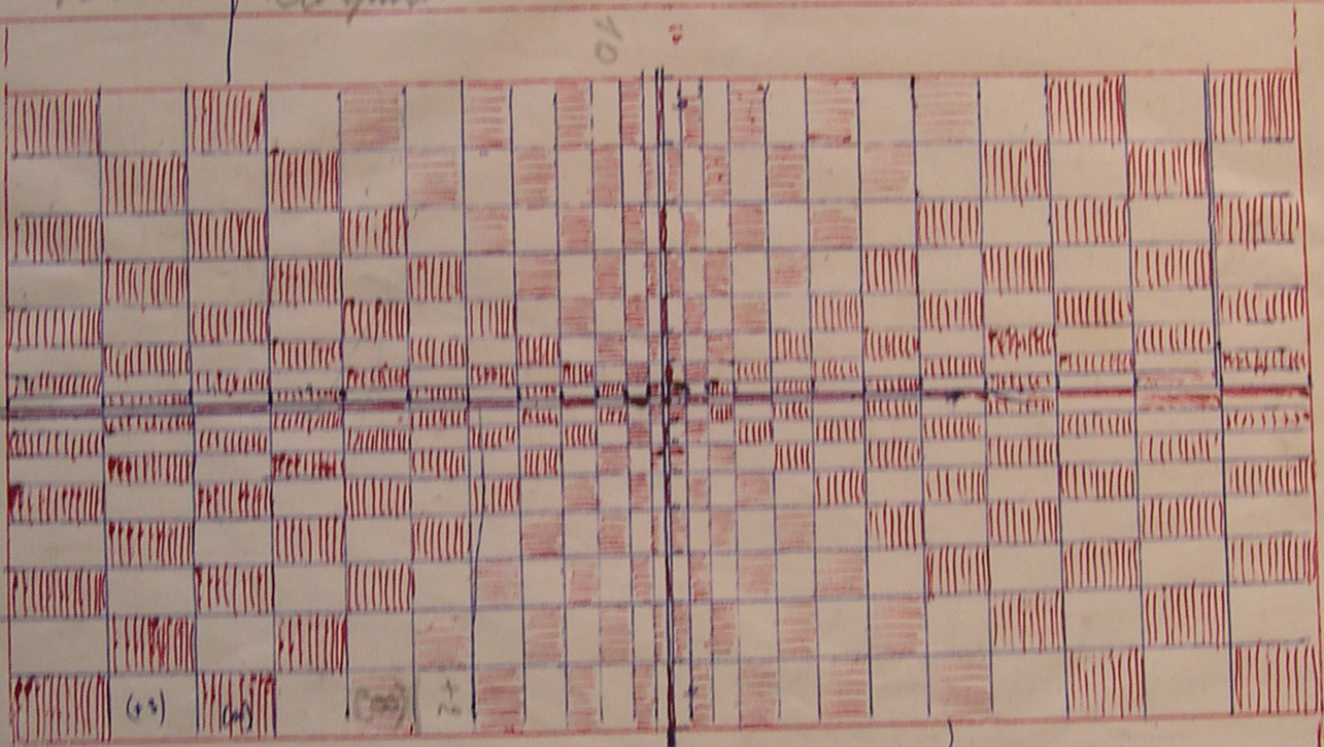
lati interi $2(39 \times 20 \times 109)$

$0,170040$
 $0,536472$

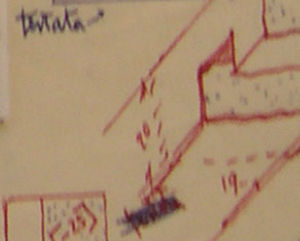
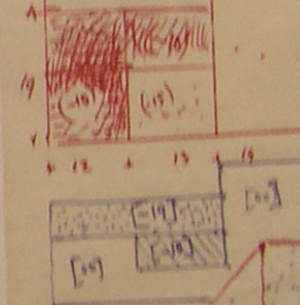
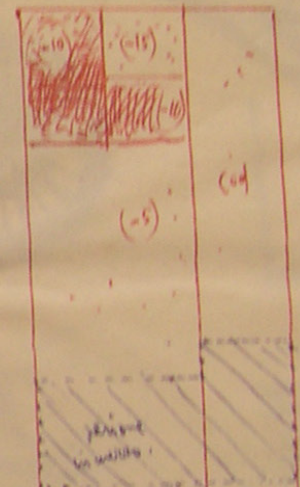
966 arch Pizzigoni
(grawito di Saffordelino (grawito diavolo))
Bianco Montorfano ④

400.000 Corpianti

RICCARDO BRANDOLISIO INC



39



fianco

visto da sopra

(-5)

$a_n(-5)$
 $a_n(-10)$
 $a_n(0)$

19



BRILLI
A. M. P.
B. M. P.

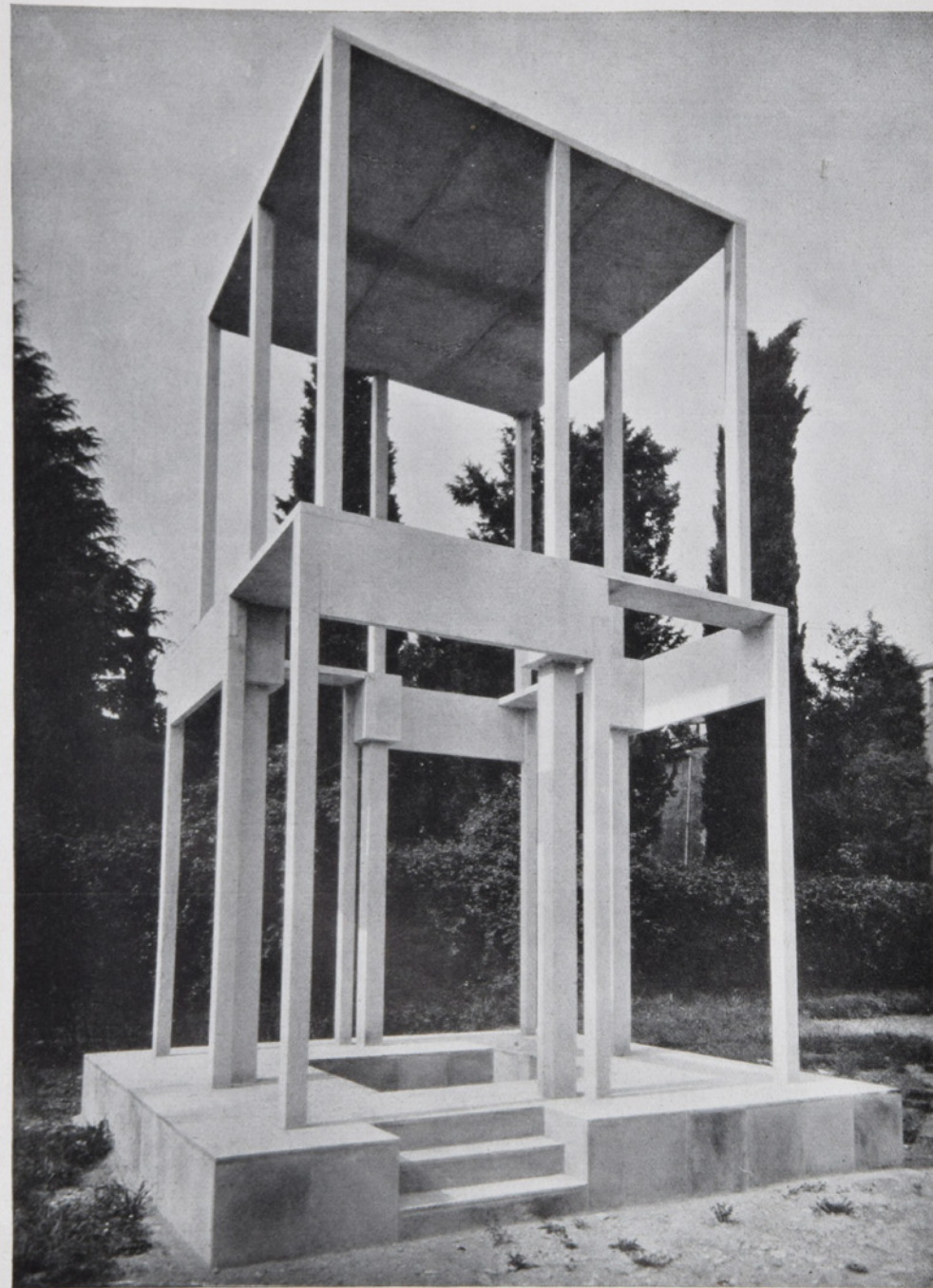
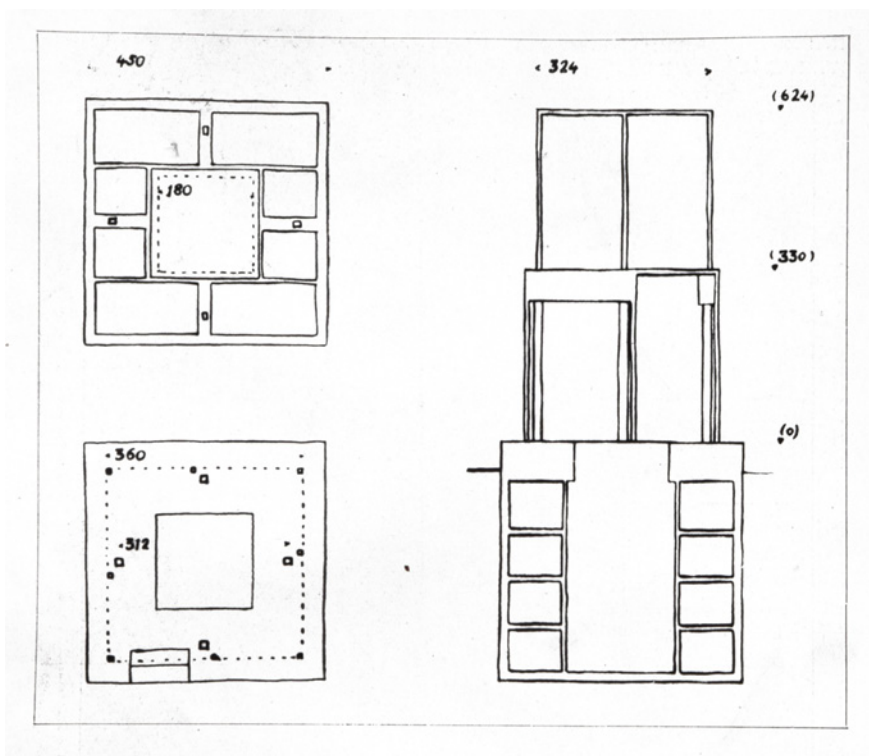


BAY, 1947

“... la migliore (tra le cappelle del cimitero di Bergamo) è la Bay, perfetta, aerea, pura nel giuoco spaziale e nella scanditura musicale delle sue proporzioni.... un opera perfetta, astratta, cerebrale, semplice ed intuitiva.”

Giovanni Muzio, 1967





MONUMENTO FUNERARIO BAY, CIMITERO DI BERGAMO
ARCHITETTO GIUSEPPE PIZZIGONI - BERGAMO

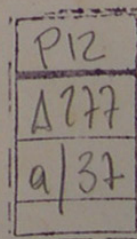
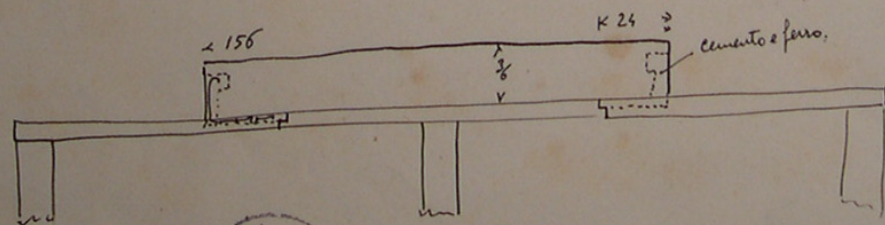
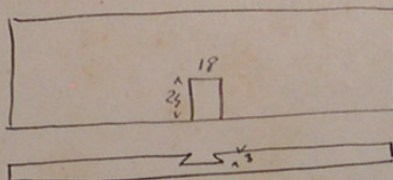
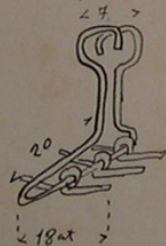


bisognerebbe avere un pezzo di granito, o porfido, o diorite di $(18 \times 36 \times 156) = \text{mc. } 0,101$

con intagliato

poi bisognerebbe nelle due lastre esterne praticare una scarrella in nervaria:

poi mettere 2 staffe doppie con tendino $\phi 12$



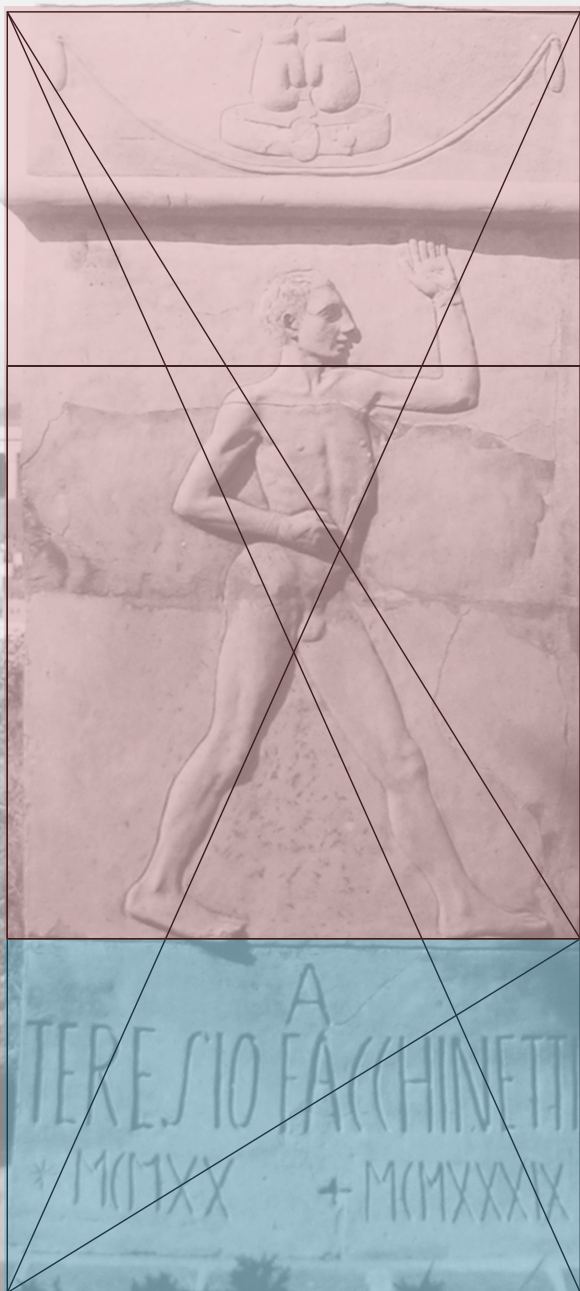


NANI, 1959









TOMBA NEL CIMITERO DI BERGAMO
 ARCH. GIUSEPPE PIZZIGONI - BERGAMO
 STELE IN TERRACOTTA DI ATTILIO NANI



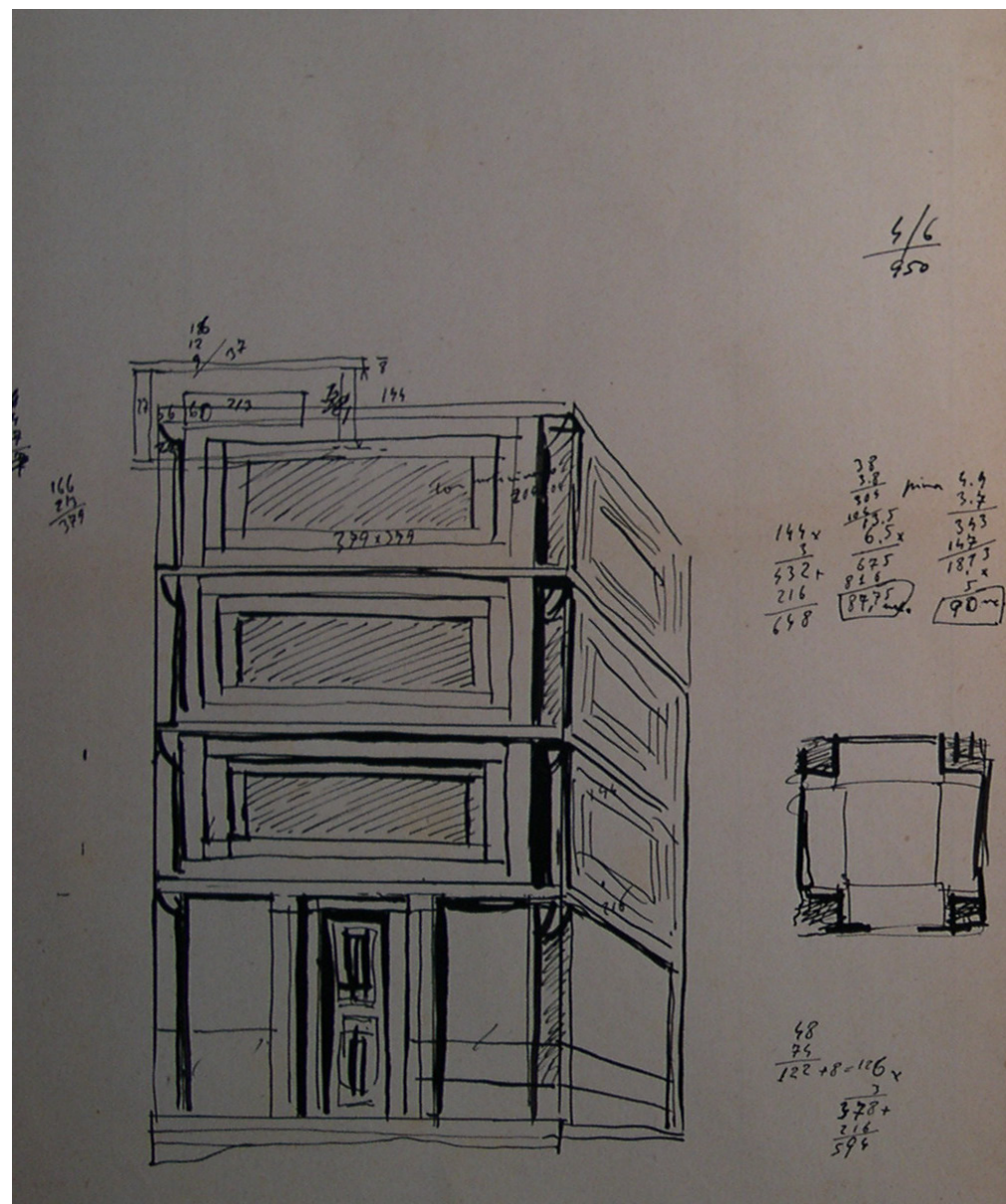
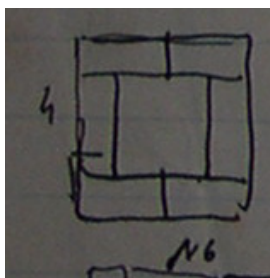
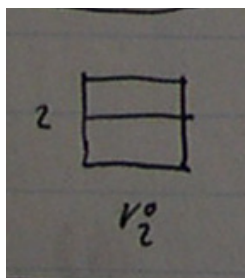
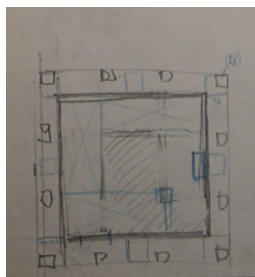
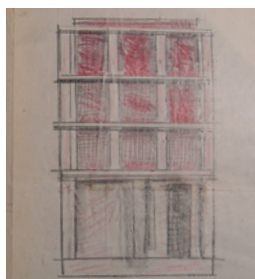
TRAVERSI, 1948-54





sole, luci e ombre più
marcate.







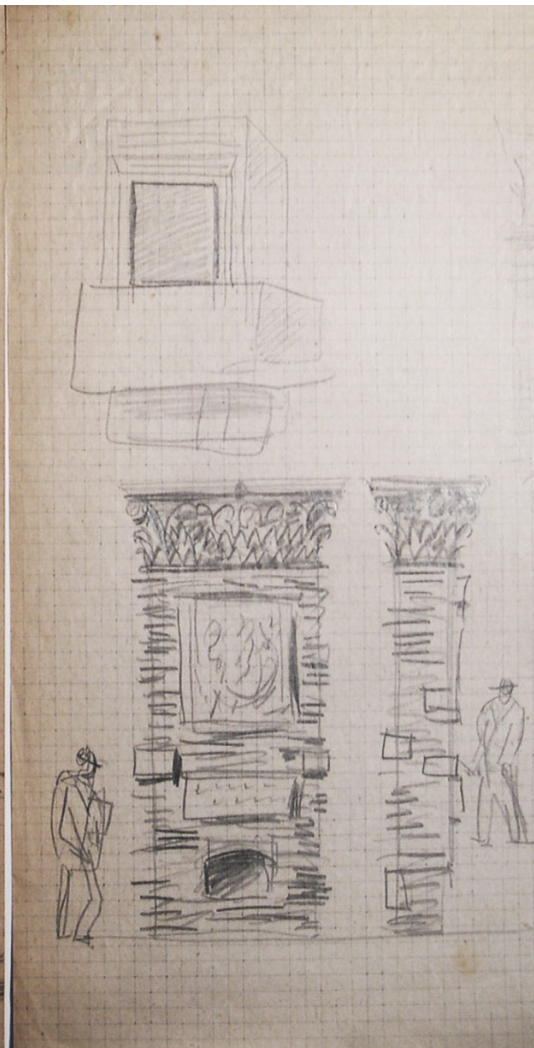
**CAPPELLA PEDRINI,
VILLA D'ALME', 1951-52**



Cappella -



9216
4/28
210





BILLI, 1956







MAFIOLETTI, 1951



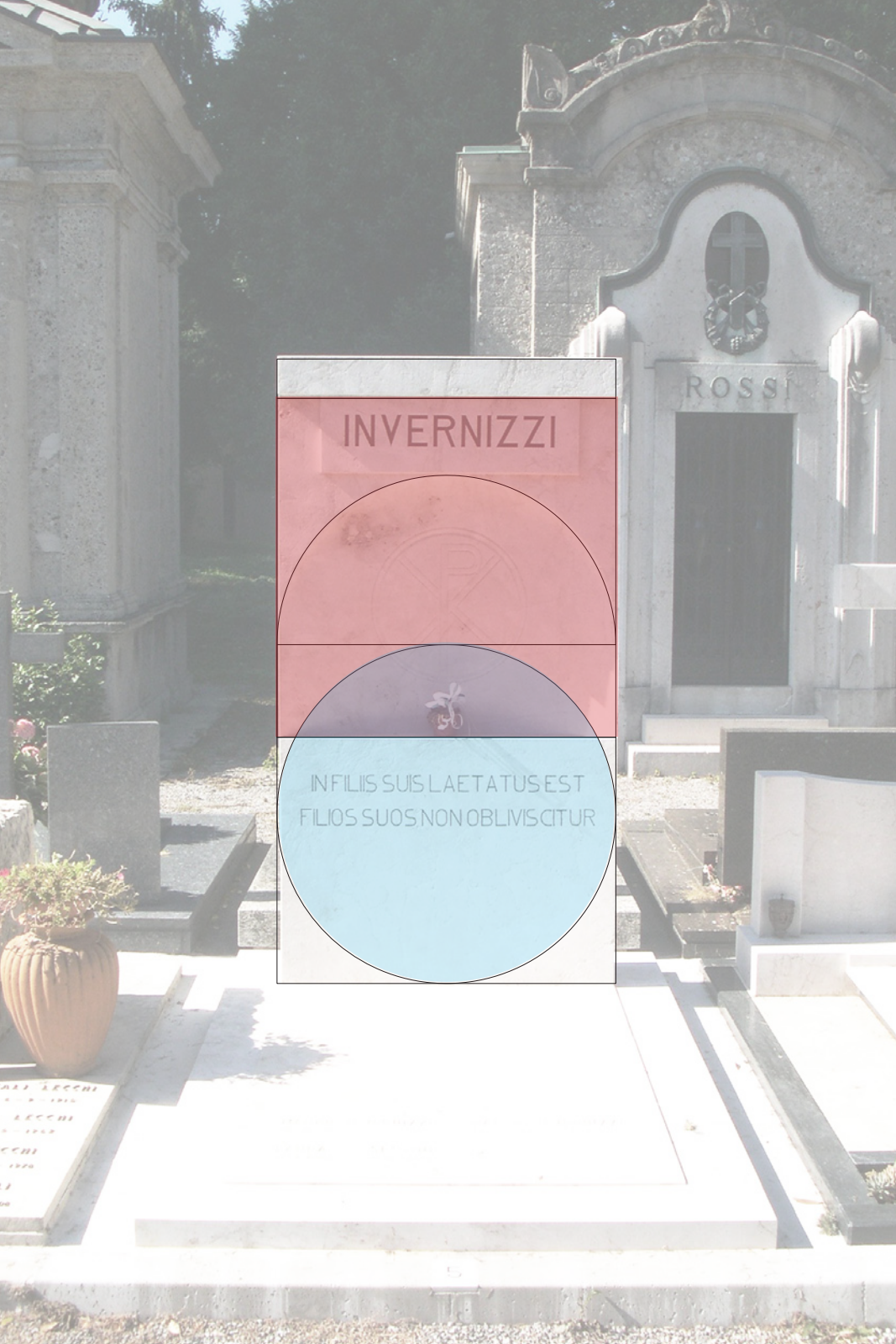


**“... usando in modo
nuovissimo ed essenziale il
granito, in modo da emulare
il legno e il metallo.”
Giovanni Muzio, 1967**



INVERNIZZI, 1931





INVERNIZZI

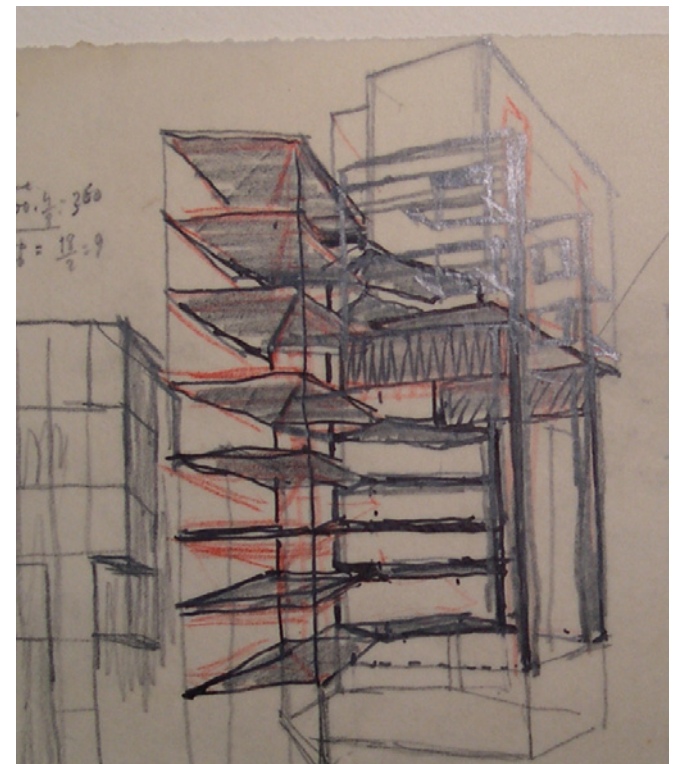
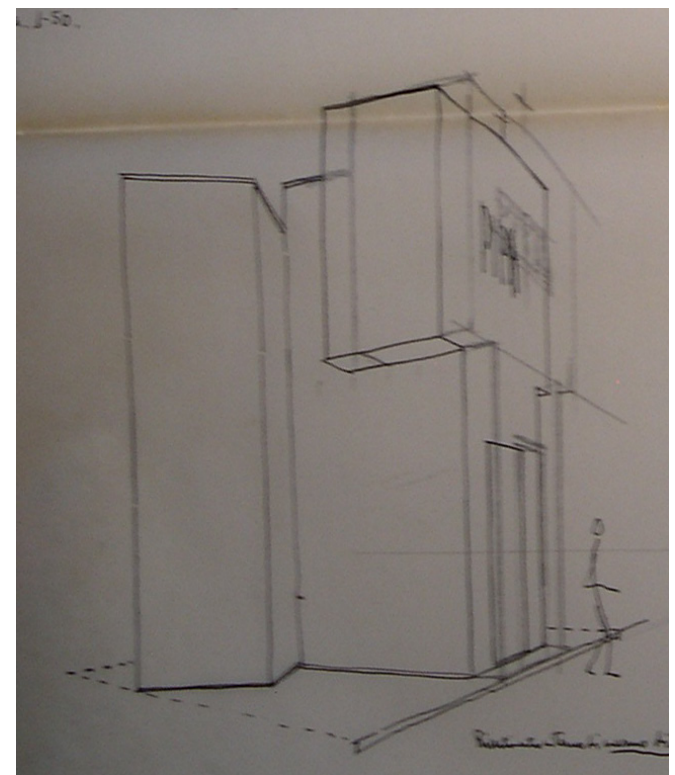
IN FILIIS SUI LAETATUS EST
FILIOS SUOS NON OBLIVISCITUR

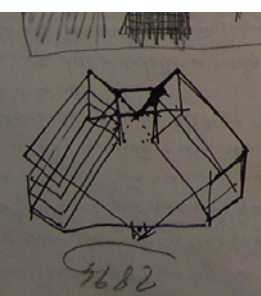
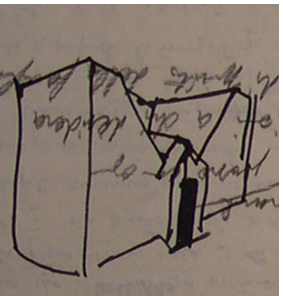
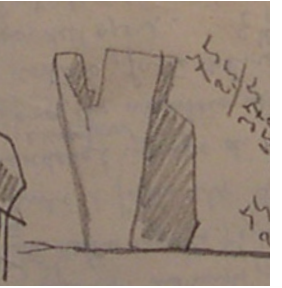
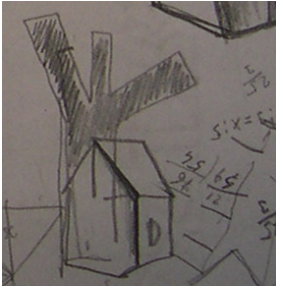
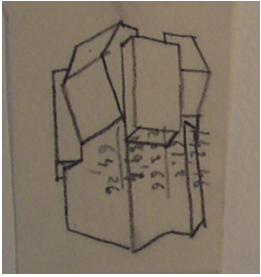
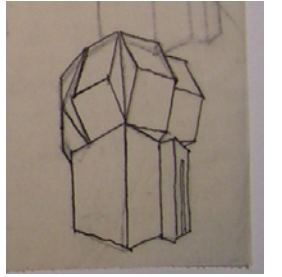
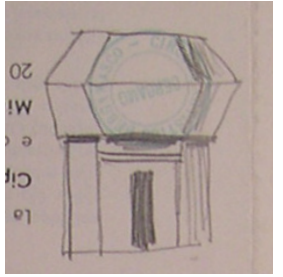
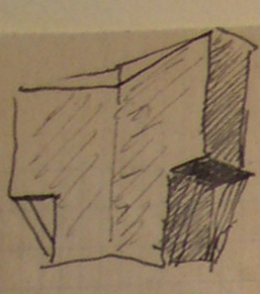
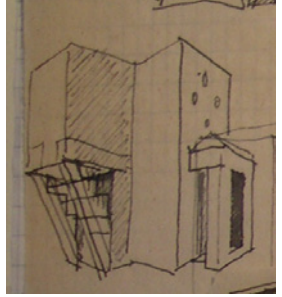
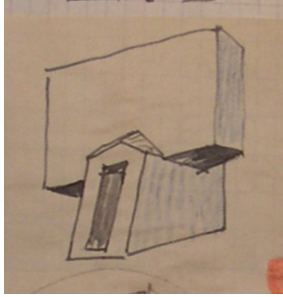
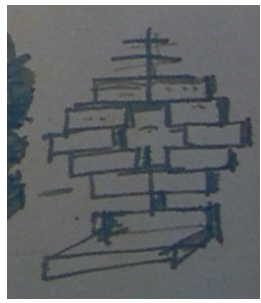
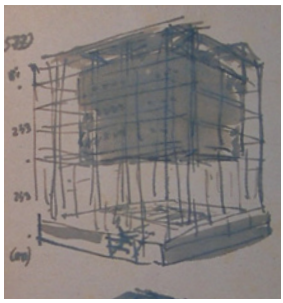


MAURO INVERNIZZI

IN FILIIS SUI LAETATUS EST
FILIOS SUOS NON OBLIVISCITUR







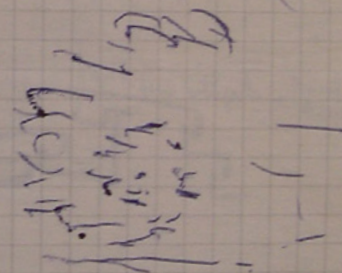
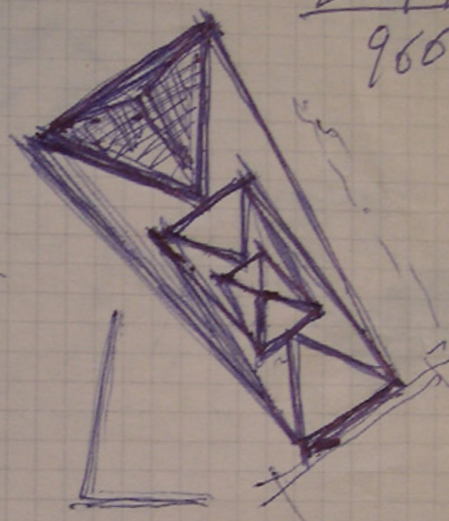
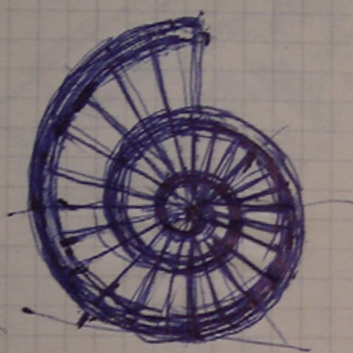




P12

eadem
mutata resurgo

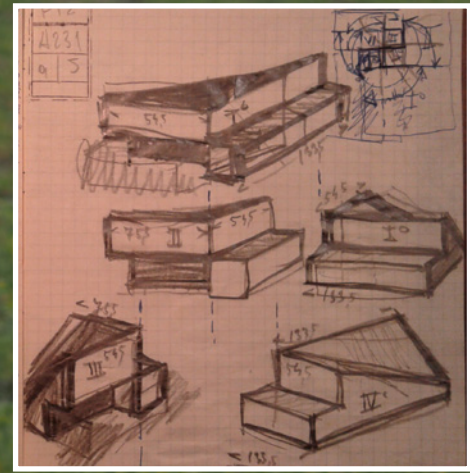
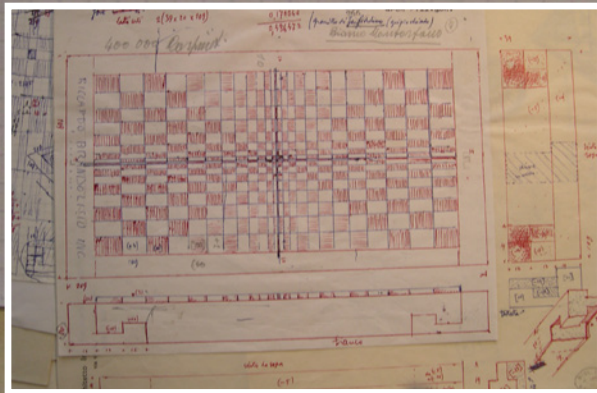
22/4
966



P12

A 231

9/1



1897 1906
1965 2001
DOTT. ING.
RICCARDO BRANDOLISIO ANGIOLA CRIPPA BRANDOLISIO



GHEZZI, 1934



Grazie!